

SIEMENS

Ingenuity for life

SICAM Device Manager

Intuitive engineering for SICAM A8000

www.siemens.com/sicam

SICAM Device Manager

Engineering today has become an important cost factor, not only in the creation of new plants for power generation, distribution and transmission.

The maintenance of existing plants and the maintenance of relevant data stocks also require high expenditure.

- Configure,
- parameterize,
- test,
- commission,

with the SICAM Device Manager you solve these tasks and requirements in an intuitive way and save time and money.

The current engineering software for the SICAM A8000 series supports project and device management for:

- CP-8000
- CP-8021
- CP-8022

SICAM Device Manager is available in German and English.



There are 3 licenses to choose from:

- 6MF7800-1FB00: SICAM Device Manager Basic
Intuitive engineering tool for SICAM A8000 Series
- 6MF7800-1FS00: SICAM Device Manager Standard
Intuitive engineering tool for
SICAM A8000 Series incl. CFC
- 6MF7800-1GS00: SICAM Device Manager Upgrade
Basic to Standard

Cyber Security

Suitable for the SICAM A8000 series, the SICAM Device Manager also meets tomorrow's cyber security requirements.

Besides the already known features, such as BDEW White Paper Conformity, SICAM Device Manager supports only digitally signed firmware.

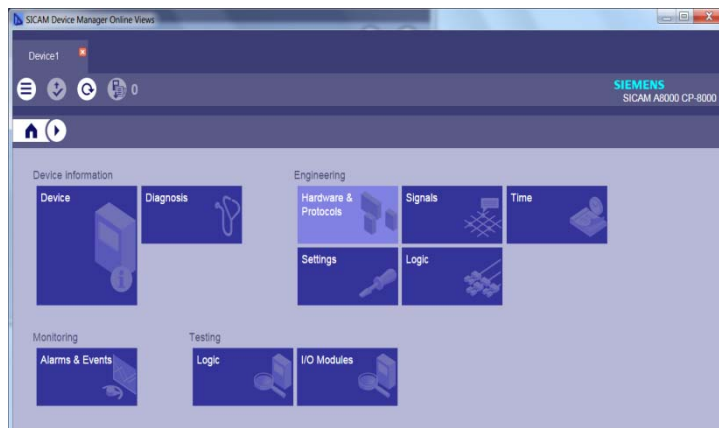
look&feel like SICAM WEB

New features of version V2.10

- IEC 61850 Client Engineering
 - Import SCL file
 - Show Access Points
 - Display IEC 61850 signals
 - Display reports
- Logic Editor - Offline simulation
- Logic Editor - new online test functions:
 - Separate/connect signals from the process
 - Force values for output signals
- Logic Editor - new signal list functions:
 - signal search
 - display of signal usage (input/output)
- Logic Editor - Use of user-specific structures for function module inputs/outputs

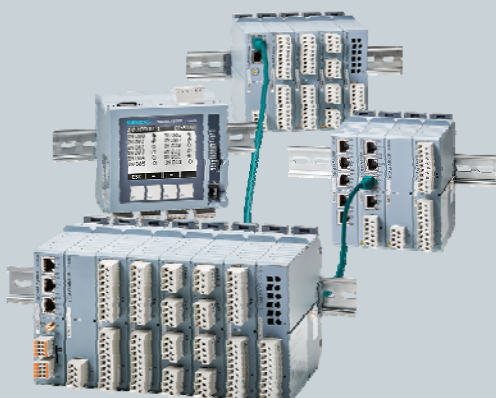
Supported operating systems

- Microsoft Windows 7
- Microsoft Windows 10
- Microsoft Windows 2012 Server R2
- Microsoft Windows 2016 Server R2



Customer benefit

- Simple parameterization and test tool for devices of the SICAM A8000 series with maximum user-friendliness
- Clearly structured user interface and logical operating steps optimized for every work situation
- Simple and clear management of projects and devices in folder structures
- Duplication of devices and automatic adjustment of specific parameters
- Compatibility between SICAM WEB and SICAM Device Manager
- Look-and-Feel correspond to SICAM WEB



Siemens AG 2018
Energy Management Division
Freyeslebenstraße 1
91058 Erlangen, Germany

SICAM Device Manager_profile.docx
Printed in Germany | © 08.18 Siemens AG

E-Mail: support.energy@siemens.com
Tel: +49 180 524 70 00

For all products using security features of OpenSSL, the following shall apply:

This product includes software developed by the OpenSSL Project for use in the OpenSSL Toolkit (www.openssl.org) and cryptographic software written by Eric Young (ey@cryptsoft.com).